

RIVERVIEW KIDSTOP

HOURS

WE OPEN NO EARLIER THAN 6:30 A.M.
AND WE CLOSE PROMPTLY AT 6:00
P.M.

*A \$20.00 LATE FEE FOR EVERY 15 MIN.
WILL BE ADDED TO YOUR DAILY FEE IF
PICK-UP IS AFTER 6:00*

DROP OFF/PICK UP

EVERY SPONSOR WILL RECEIVE A BLUE
CARD WITH THEIR NAME ON IT. YOU
WILL BE RESPONSIBLE FOR WALKING
YOUR CHILD IN THE MAIN ENTRANCE
EVERY DAY TO CHECK THEM IN AND
OUT WITH THIS CARD. BLUE CARDS
ARE ALSO ON THE BGCMN APP.

FOR THE SAFETY OF YOUR CHILD **DO
NOT** DROP YOUR CHILD OFF AT THE
DOOR AND LET THEM WALK IN ALONE.

WE MAY ALSO ASK TO SEE PHOTO ID
SO PLEASE HAVE THIS WITH YOU.

FEE INFORMATION

DAILY RATE PER CHILD: \$33.50

FEES ARE DUE FRIDAY BY 6PM
PAYMENTS CAN BE MADE AT THE SITE
WITH CASH/CHECK, OR ONLINE WITH
CARD.

A \$10.00 LATE FEE WILL BE
AUTOMATICALLY ADDED TO EACH
ACCOUNT WITH A NEGATIVE BALANCE
AFTER 6PM ON FRIDAY!

EASY PAY

TO AVOID LATE FEES, ASK ABOUT OUR
EASY PAY PROGRAM THAT MAKES IT
EASY TO SIGN UP FOR FIELD TRIPS!

ASSISTANCE

WE DO ACCEPT COUNTY CHILDCARE
ASSISTANCE AND OFFER
SCHOLARSHIPS TO THOSE WHO
QUALIFY! PLEASE SEE MANAGEMENT
WITH ANY QUESTIONS.

PERSONAL BELONGINGS

TOYS, ELECTRONIC DEVICES,
POKÉMON, ETC. ARE NOT
ALLOWED AT KIDSTOP.

KIDSTOP IS NOT RESPONSIBLE
FOR LOST OR STOLEN ITEMS.

WHAT TO BRING TO KIDSTOP?

TENNIS SHOES ARE **REQUIRED**
FOR THE GYM AND ARE
STRONGLY SUGGESTED FOR
FIELD TRIPS. BRING A WATER
BOTTLE, COLD LUNCH, AND
BAG TO CARRY ITEMS DAILY!

SNACK & LUNCH

SNACK & MILK WILL BE
PROVIDED IN THE MORNING
AND AFTERNOON.
MEMBERS ARE REQUIRED TO
BRING A COLD LUNCH!
WE **DO NOT** HAVE ACCESS TO
COOLERS OR MICROWAVES.

SCHEDULE CHANGES

EACH FAMILY IS ASKED TO EITHER BE ON A
FIXED OR CUSTOMIZED SCHEDULE

FIXED SCHEDULE: A SET SCHEDULE EACH
WEEK FOR EXAMPLE (MWF OR TTH, ETC.)

CUSTOMIZED SCHEDULE: SUBMITTING
YOUR CHILD'S SCHEDULE EVERY WEEK
FOR THE FOLLOWING WEEK VIA BGCMN
APP. SCHEDULES MUST BE SUBMITTED BY
11:59PM ON WEDNESDAYS.

UNEXPECTED ATTENDANCE: IF A CHILD
ATTENDS ON AN UNSCHEDULED DAY
THERE WILL BE A \$5 UNEXPECTED FEE
ATTACHED TO THE DAILY FEE.

*PLEASE NOTE: YOU WILL BE CHARGED THE DAILY RATE
ON SCHEDULE DAYS REGARDLESS OF ATTENDANCE*

CANCELATION DAYS: EACH CHILD
RECEIVES 5 FREE DAYS TO USE PER
CALENDAR YEAR (JAN.-DEC.) YOU CAN USE
THESE IN THE APP OR TALK WITH
MANAGEMENT ON HOW TO USE THEM.

IF YOU HAVE ANY QUESTIONS, PLEASE SEE
KIDSTOP MANAGEMENT.

FIELD TRIPS

FIELD TRIPS ARE OPTIONAL.

MEMBERS WILL ONLY BE SIGNED UP FOR A FIELD TRIP WHEN BOTH THE FORM AND PAYMENT ARE RECEIVED. ALL FIELD TRIPS ARE NON-REFUNDABLE AND CREDIT WILL NOT BE GIVEN UNLESS **KIDSTOP CANCELS THE TRIP.**

FIELD TRIPS ARE A PRIVILEGE AND CAN BE TAKEN AWAY FOR UNACCEPTABLE BEHAVIOR. SIGN-UP IS ON A FIRST-COME, FIRST-SERVED BASIS!

FIELD TRIPS SIGN UP DATES

JUNE FIELD TRIPS: MAY 19TH

JULY FIELD TRIPS: JUNE 16TH

AUGUST FIELD TRIPS: JULY 21ST

PLEASE NOTE SIGN UP DATES ARE SUBJECT TO CHANGE

LUNCH CHOICES

SUBWAY: \$7.50 WILL BE ON WED.

ORDER NEEDS TO BE PLACE BY TUES. AT 6PM

GARY'S PIZZA: \$6 WILL BE ON FRI.

ORDER NEEDS TO BE PLACED BY THURS. AT 6PM

SUMMER SCHOOL

RIVERVIEW KIDSTOP WILL OFFER PICKUP **FROM** SMS DURING SUMMER SCHOOL BUT **WE WILL NOT BE ABLE TO DROP OFF FOR SUMMER SCHOOL**

ICE CREAM MONDAYS

ICE CREAM BE OFFERED EVERY OTHER MONDAY DURING LUNCH FOR \$3. SIGN UPS WILL BE EACH ICE CREAM MONDAY MORNING

FREEZIE FRIDAYS

EACH FRIDAY WE WILL ENJOY FREEZIES AFTER LUNCH. EVERY MEMBER WILL GET ONE FOR FREE, AND MAY PURCHASE ADDITIONAL FREEZIES FOR 25C EACH.

AGE

CLARIFICATION

A KIDSTOP MEMBER WILL STILL BE REFERRED TO AS THE GRADE THEY JUST COMPLETED.

FOR EXAMPLE, IF YOUR CHILD JUST FINISHED 3RD GRADE THEY WILL STILL BE REFERRED TO AS A 3RD GRADER FOR THE SUMMER.

RIVERVIEW KIDSTOP WILL BE AT OAK RIDGE EARLY LEARNING ACADEMY THIS SUMMER! DUE TO CONSTRUCTION ON THE HVAC SYSTEM AT RIS, ALL RIVERVIEW STUDENTS WILL BE AT OAK RIDGE. WE WILL HAVE OUR OWN SPACE AWAY FROM OAK RIDGE STUDENTS WITH MINIMAL OVERLAP DURING MEAL AND SNACK TIMES. FOR ANY QUESTIONS OR CONCERNS, PLEASE REACH OUT TO THE RIVERVIEW SITE MANAGER.

OAK RIDGE ADDRESS: 1111 27TH ST N, SARTELL, MN 56377

RIVERVIEW SITE PHONE NUMBER: 320-257-5444

SITE EMAIL: RIVERVIEW@BGCMN.ORG

RIVERVIEW SITE MANAGER: CHAD ALLWORTH

EMAIL: CALLWORTH@BGCMN.ORG

RIVERVIEW ASSISTANT SITE MANAGER: VERONICA PEACOCK

RIVERVIEW ASSISTANT SITE MANAGER: KATIE MCLLOUD

June

2026

MONDAY

TUESDAY

WEDNESDAY

THURSDAY

FRIDAY

1  **FIRST DAY OF SUMMER**

2

3  4

4

5  **PIZZA FRIDAY**

8  **ICE CREAM MONDAY**

9  **DIY TIE DYE!**

10  **Emotion in Motion**

11

12  **WEAR YOUR TIE DYE!**

15

16  **Air Maxx TRAMPOLINE PARK**

17  **SPLASH PAD**

18  **SKATIN' PLACE**
St Cloud, MN

19  **KIDSTOP CLOSED**

FUTURE READY DAY

LEADER IN ME DAY



MENTOR & ALUMNI DAY


SKILLS FOR SUCCESS DAY

CELEBRATE THE FUTURE DAY

22  **ICE CREAM MONDAY**  **DREAM JOB DRESS UP!**

23  **NOAH'S ARK ANIMAL WORKSHOP**  **5TH GRADERS RUN ROTATIONS!**

24 **THANK YOU CARDS TO YOUR HERO OR MENTOR**  **Disney PIXAR Toy Story 5** 

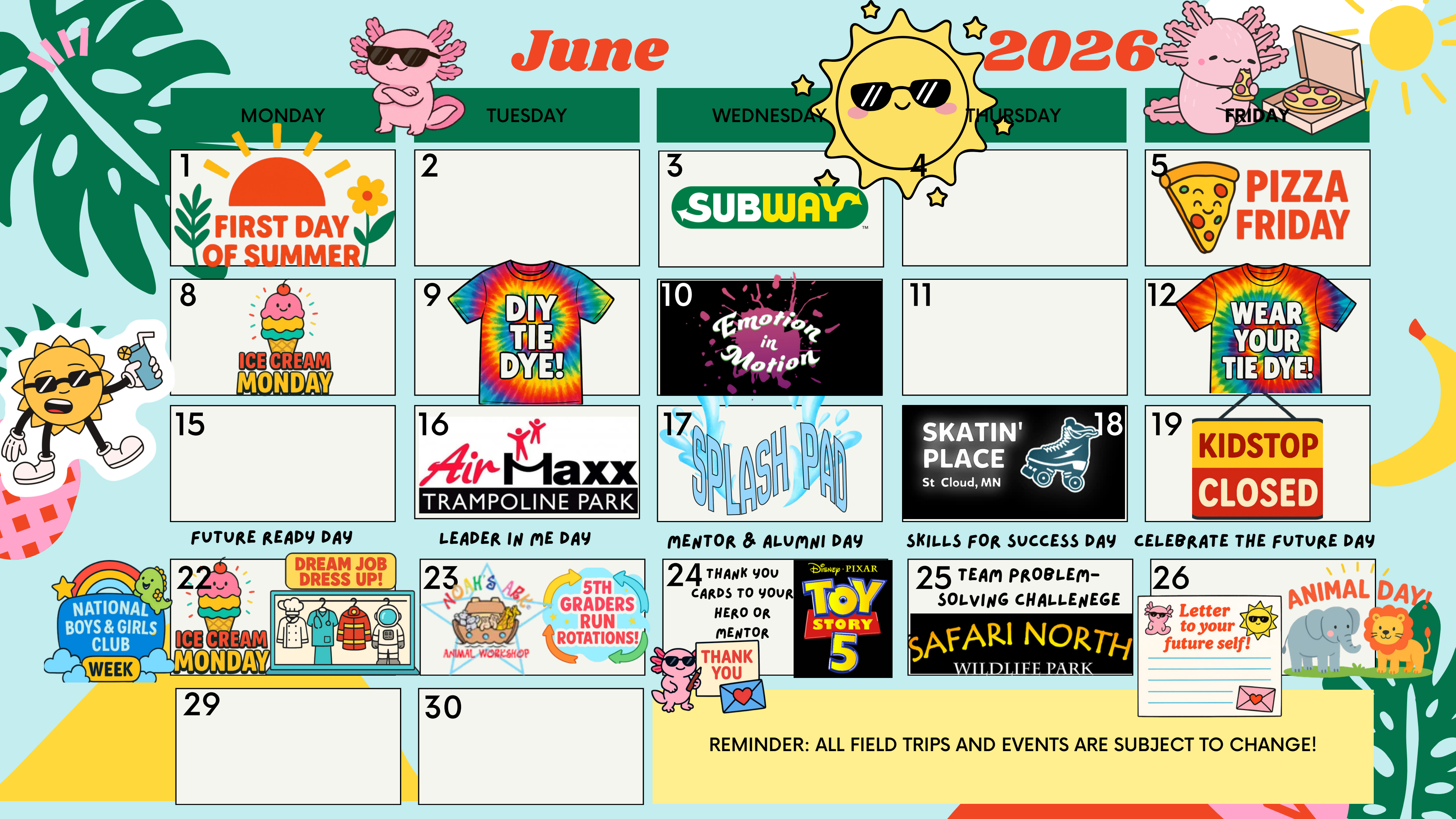
25 **TEAM PROBLEM-SOLVING CHALLENGE**  **SAFARI NORTH WILDLIFE PARK**

26  **Letter to your future self!**  **ANIMAL DAY!**

29

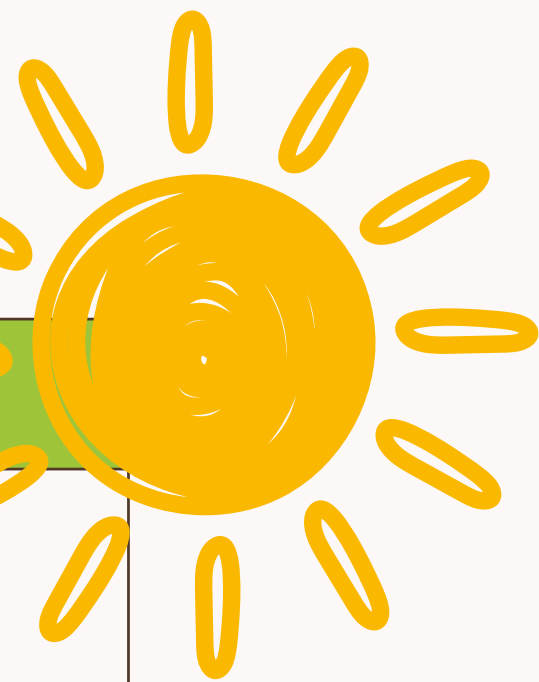
30

REMINDER: ALL FIELD TRIPS AND EVENTS ARE SUBJECT TO CHANGE!



July

2026



Mon	Tue	Wed	Thu	Fri
REMINDER: ALL FIELD TRIPS AND EVENTS ARE SUBJECT TO CHANGE!		1 	2	3
6 	7 	8 	9 	10
13	14 	15 	16	17
20 	21 	22	23 	24
27	28 	29 	30	31

AUGUST 2026

Mon	Tue	Wed	Thu	Fri
3  ICE CREAM MONDAY	4 MINIONS 3	5  SCIENCE MUSEUM OF MINNESOTA	6	7  MAD SCIENTIST DAY!
10	11  CHUCK E. CHEESE.	12  SCIENCE FAIR	13  JUMP CITY Inflatable Rentals	14  PAJAMA DAY!
17  ICE CREAM MONDAY	18 	19  SPLASH PAD	20  SKATIN' PLACE St Cloud, MN	21  SARTELL SPIRIT DAY!
24	25	26	27  DJ DANCE PARTY	28  LAST DAY OF SUMMER

31
KIDSTOP CLOSED

REMINDER: ALL FIELD TRIPS AND EVENTS ARE SUBJECT TO CHANGE!